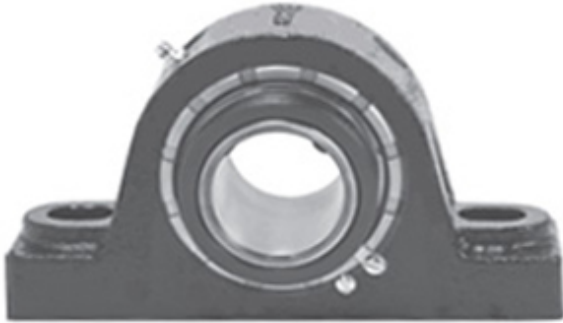




# NTN BEARING MANUFACTURING DE MEXICO,S...

0.984 Inch | 25 Millimeter x 2.563 Inch | 65.09  
Millimeter x 1.563 Inch | 39.7 Millimeter LINK  
BELT PB224M25H Pillow Block Bearings



Bearing No. PB224M25H

PB224M25H Bearing 2D drawings and 3D CAD models

Category	Pillow Block Bearings
Inventory	10.0
Manufacturer Name	REXNORD
Minimum Buy Quantity	N/A
Weight	2.1
Product Group	M06288
Number of Mounting Holes	2
Mounting Method	Concentric Collar
Housing Style	2 Bolt Pillow Block
Rolling Element	Spherical Roller Bearing
Housing Material	Cast Iron
Expansion / Non-expansion	Non-expansion
Mounting Bolts	10 Millimeter
Relubricatable	Yes
Insert Part Number	B224M25HL
Seals	Floating Labyrinth
Housing Configuration	1 Piece Solid
Inch - Metric	Metric
Other Features	Double Row   Single Collar   Extended Inner Race   With Set Screw
Long Description	2 Bolt Pillow Block; 25MM Bore; 39.7MM Base to Center Height; Concentric Collar Mount; Spherical Roller Bearing; Relubricatable; Cast Iron;



## NTN BEARING MANUFACTURING DE MEXICO,S...

	Floating Labyrinth; Non-expansion
Category	Pillow Block
UNSPSC	31171511
Harmonized Tariff Code	8483.20.40.80
Noun	Bearing
Keyword String	Pillow Block
Manufacturer URL	<a href="http://www.rexnord.com">http://www.rexnord.com</a>
Manufacturer Item Number	PB224M25H
Manufacturer Internal Number	5897483
Weight / LBS	4.63
Bolt Spacing Minimum	0 Inch   0Millimeter
Nominal Bolt Center to Center	4.4 Inch   111.1 Millimeter
Bolt Spacing Maximum	0 Inch   0Millimeter
Actual Bolt Center to Center	4.4 Inch   111.1Millimeter
d	0.984 Inch   25 Millimeter
B	1.563 Inch   39.7 Millimeter
D	2.563 Inch   65.09 Millimeter